

Landtake in Luxembourg

Tom Fourmann & Marco Tholl



LE GOUVERNEMENT
DU GRAND-DUCHÉ DE LUXEMBOURG
Ministère de l'Énergie et de
l'Aménagement du territoire

PUBLIC WORKSHOP

UNDERSTANDING LAND TAKE. INDICATORS, DATASETS, MAPPING





Land take in Luxembourg

Datasets, Statistics, Indicators and
Mapping



LE GOUVERNEMENT
DU GRAND-DUCHÉ DE LUXEMBOURG
Ministère de l'Énergie et de
l'Aménagement du territoire

Territorial context



LE GOUVERNEMENT
DU GRAND-DUCHÉ DE LUXEMBOURG

Area: 2'586 km²

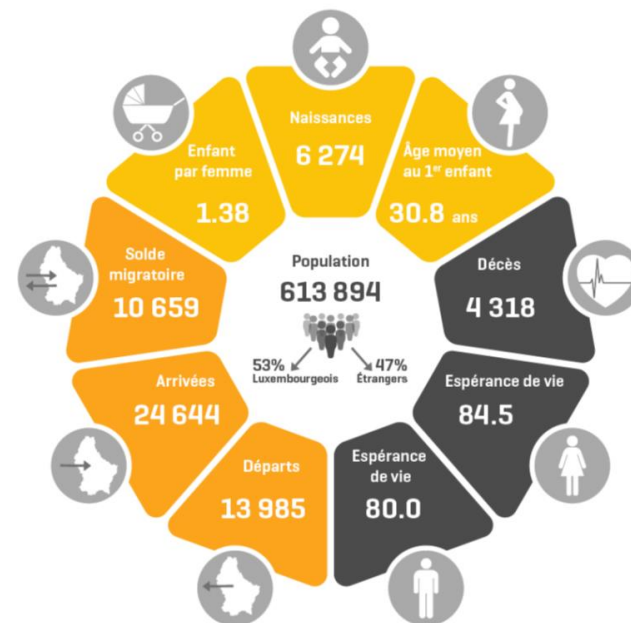
Population: 614'000

approximately 170 nationalities;
percentage of foreigners: 47,5 %

Capital Luxembourg-City: 119'000
inhabitants

Jobs: 428'000

Cross-border workers: 195'000



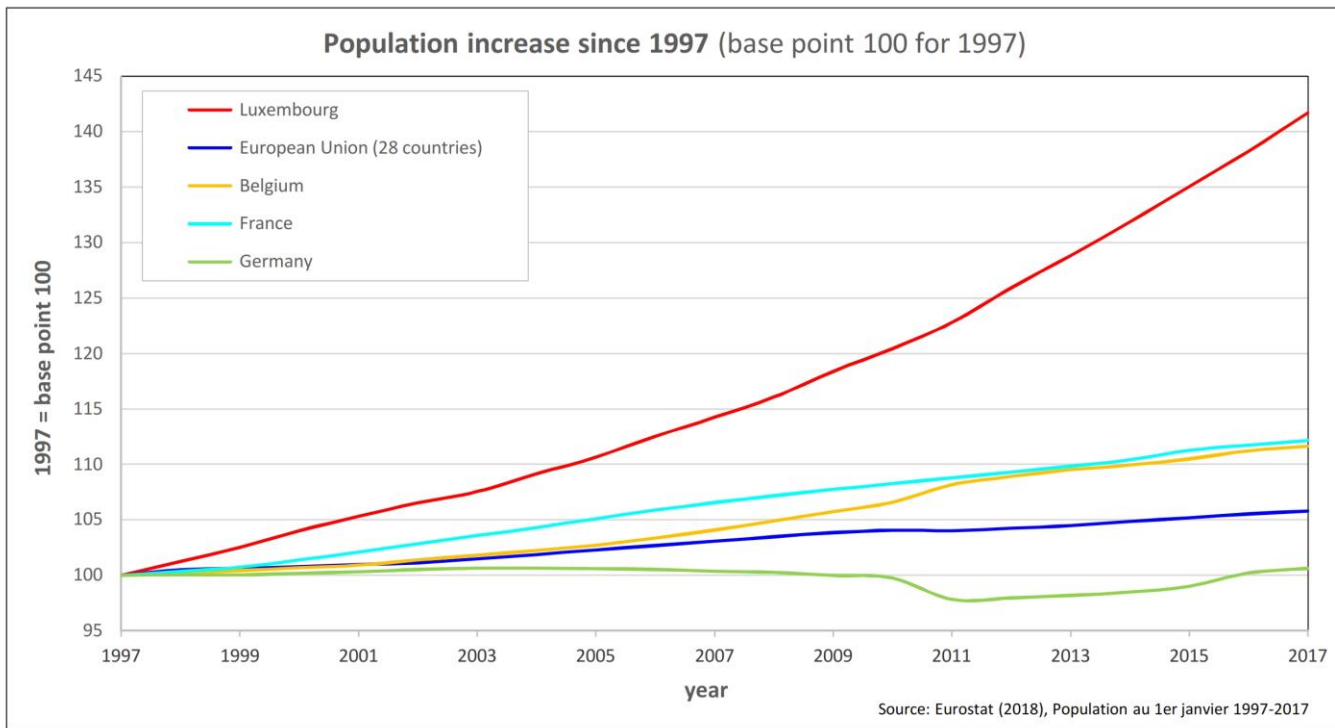
Source: STATEC 2019

Part 1: Growth in Luxembourg



LE GOUVERNEMENT
DU GRAND-DUCHÉ DE LUXEMBOURG

- Population development at a very strong rate, unequalled in Europe
 - In relative terms, Luxembourg is the country in Europe with the highest growth rates in terms of population and immigration

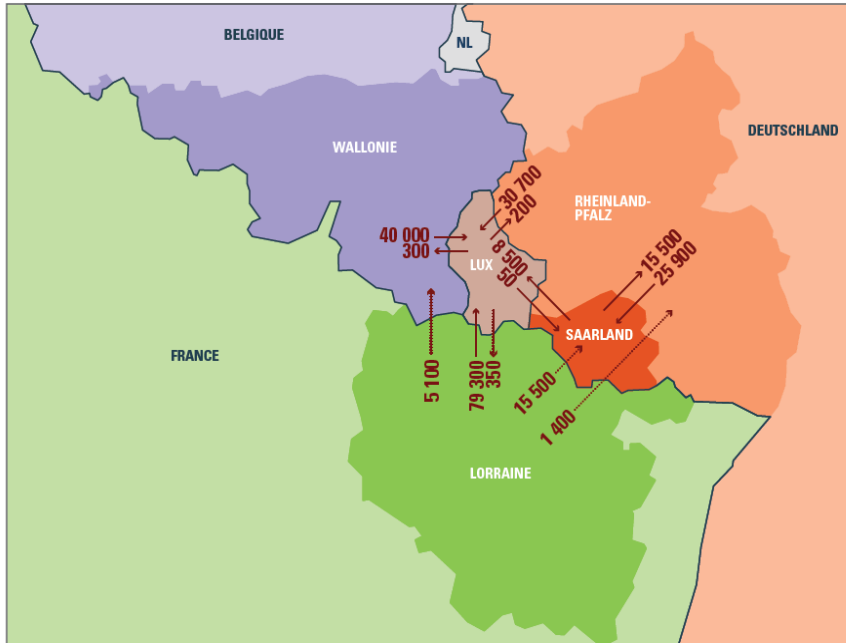


Cross-border workers



LE GOUVERNEMENT
DU GRAND-DUCHÉ DE LUXEMBOURG

- 51,5 % from France
- 24,3 % from Belgium
- 24,2 % from Germany

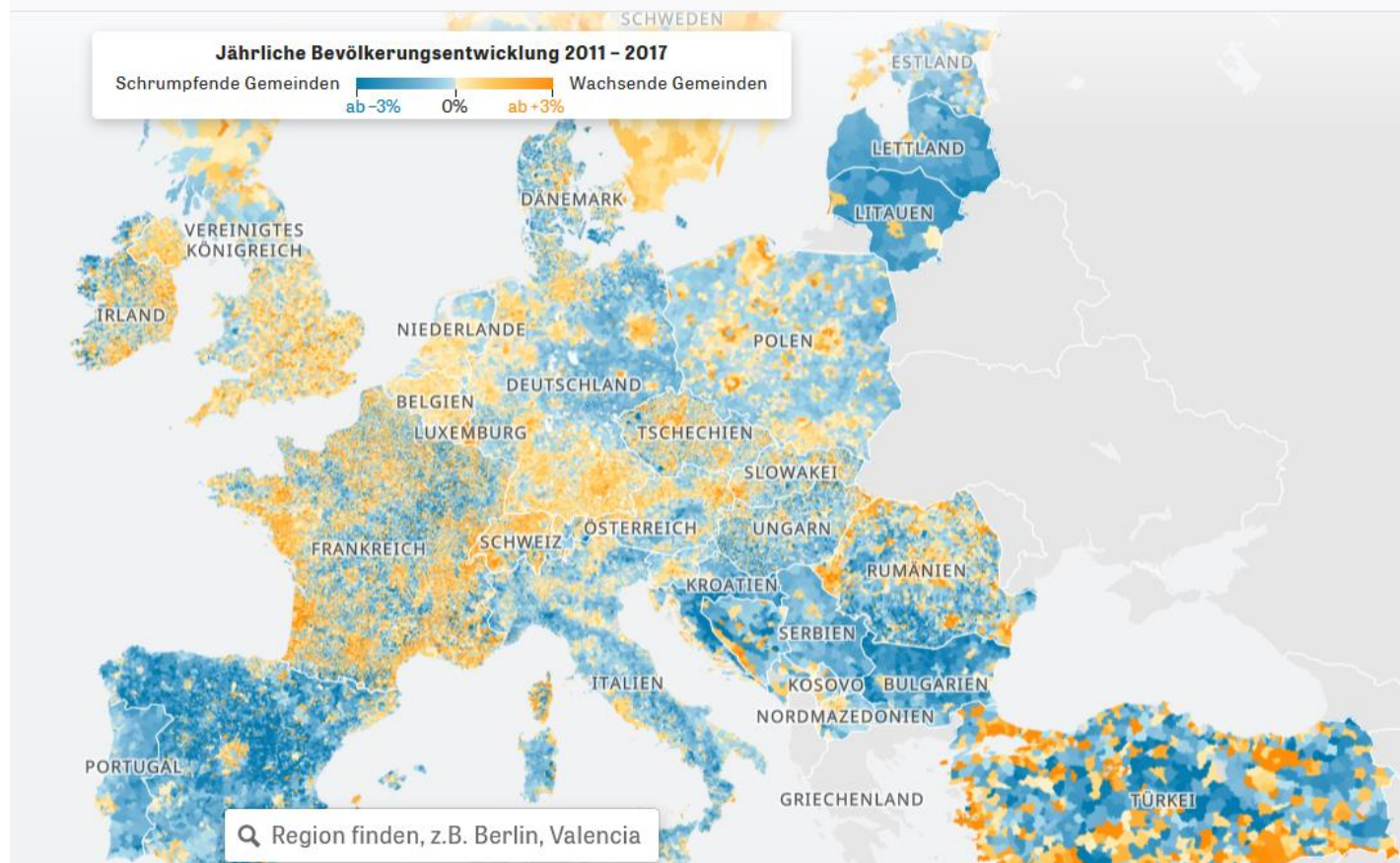


Source:
Statistics Grande Région

Annual population development 2011-2017



LE GOUVERNEMENT
DU GRAND-DUCHÉ DE LUXEMBOURG

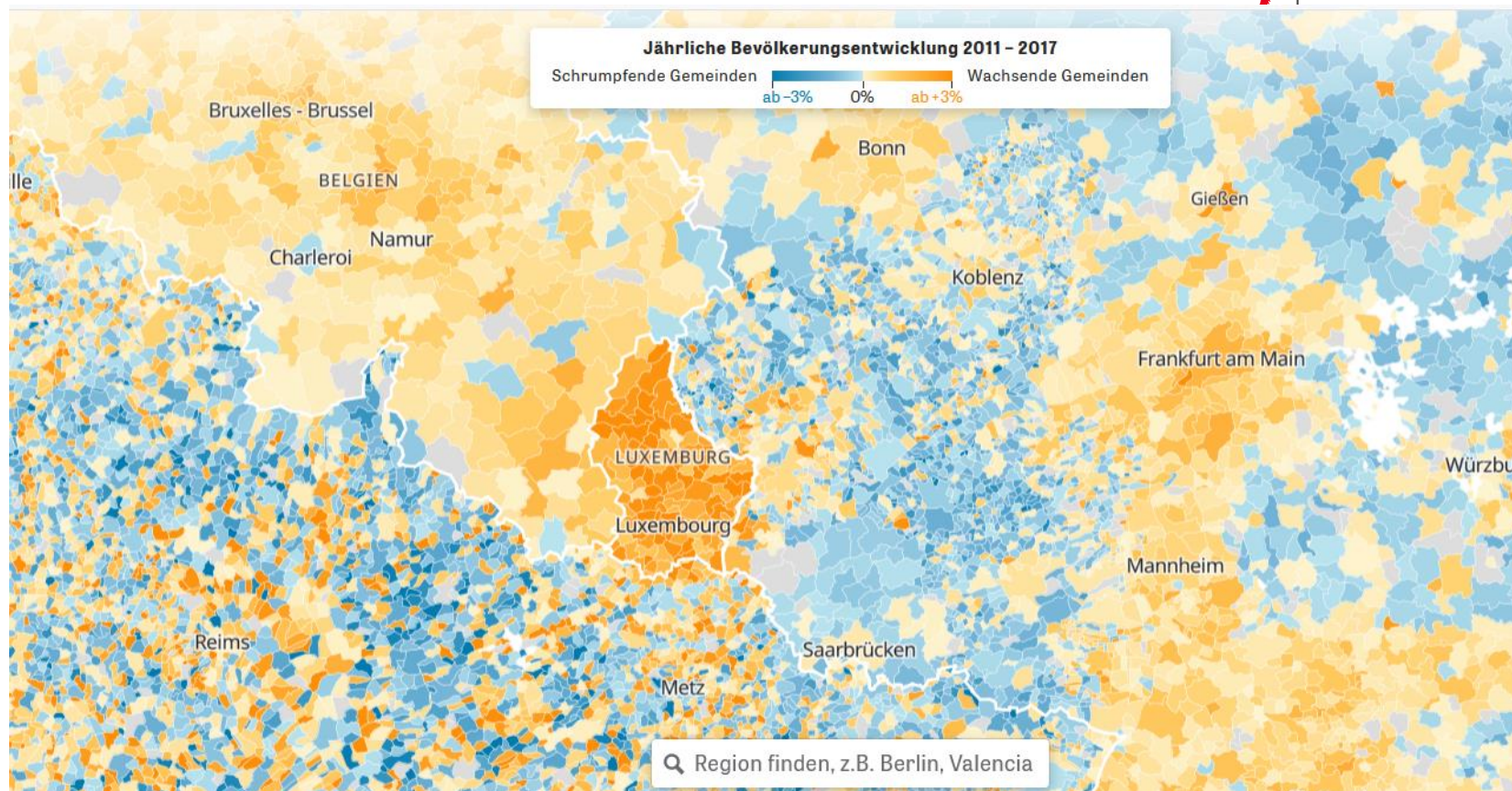


<https://www.zeit.de/politik/ausland/2019-07/demografie-europa-bevoelkerung-entwicklung-wandel-karte>

Annual population development 2011-2017



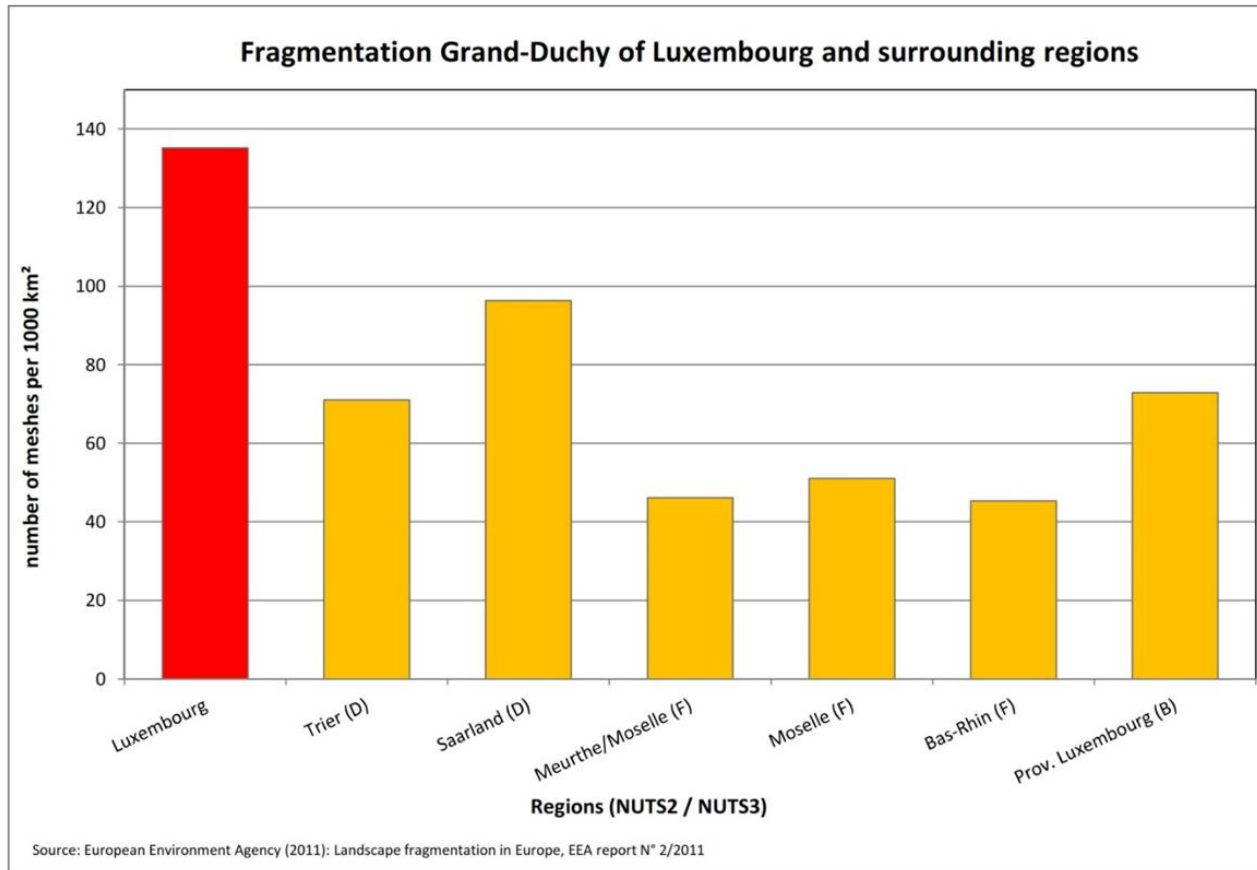
LE GOUVERNEMENT
DU GRAND-DUCHÉ DE LUXEMBOURG



Fragmentation of the landscape



LE GOUVERNEMENT
DU GRAND-DUCHÉ DE LUXEMBOURG





Ministry of Energy and Spatial Planning - Department of Spatial Planning

activities:

- Territorial strategies
- Regulatory plans
- Urban and regional development
- Natural parks
- Cross-border spatial planning
- European territorial cooperation
- International spatial planning policy



- ensure optimal living conditions to the population in all parts of the national territory
- concentrate territorial development/land consumption to the most appropriate areas of the national territory
- observe the evolution of land use
- ensure the coordination of sectoral policies with an impact on land use
- ensure rational land use and concentric and coherent urban development



- National spatial planning strategy (PDAT - Master Programme for Spatial Planning) → framework
- Sectoral Master Plans (Housing, Landscapes, Transport, Economic zones)
- Special zoning plans



- Landcover 2015 (1*1m)
- Landcover 2018 (0,2*0,2m)
- Landuse 2015
 - Landuse changes 2007-2015
- Landuse 2018 (available by end of 2019)
 - Landuse changes 2015-2018



- in cooperation with the Ministry of the Environment, Climate and Sustainable Development
- project for LC & LU 2015 funded by ESA, LC & LU 2018 funded by 2 Ministries
- contractor: space4environment (dataset production) & LIST – Luxembourg Institute of Science and Technology (Land Information System)
- update: planned for every 3 years



- **Land cover** corresponds to a **physical description** of space, the observed (bio)physical cover of the earth's surface (DI GREGORIO & JANSEN 1997). It is that which overlays or currently covers the ground
 - Can be observed by various "sources of observation" at different distances between the source and the earth's surface
- **Land use** in terms of **functional dimension** corresponds to the description of areas in terms of their **socio-economic purpose**



- Pleiades images (50-cm B&W and 2-meter multispectral)
- SPOT-5/Take-5 images (as multitemporal ancillary information for seasonal and permanent vegetation classes)
- Orthophotos
- Ancillary data: OBS map (former LC/LU map), Topographic map, Digital elevation model, Cadastral map, Agricultural Parcels



- Buildings
- Other constructed area
- Bare Land (bare soils, rocks, sand & gravel)
- Water
- Trees and bushes
- Permanent herbaceous vegetation
- Seasonal herbaceous vegetation

Land Cover Map 2015



LE GOUVERNEMENT
DU GRAND-DUCHÉ DE LUXEMBOURG



- building
- other constructed area
- bare soils
- water
- trees and bushes
- shadows
- permanent herb. vegetation
- temporary herb. vegetation



MEA - DATer 2019
LIS-L Landcover 2015

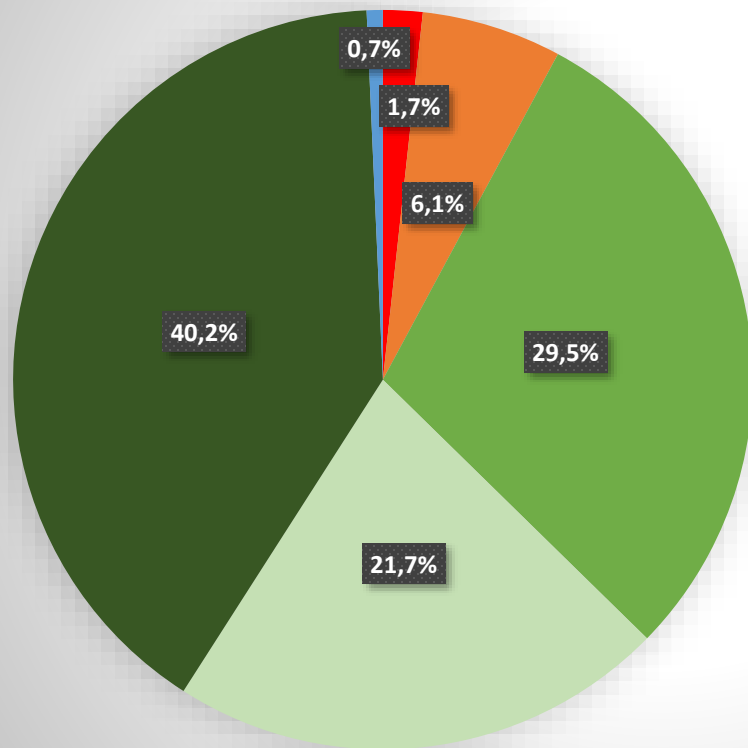


MEA - DATer 2019
Orthophoto 2016

Land Cover 2015



LE GOUVERNEMENT
DU GRAND-DUCHÉ DE LUXEMBOURG

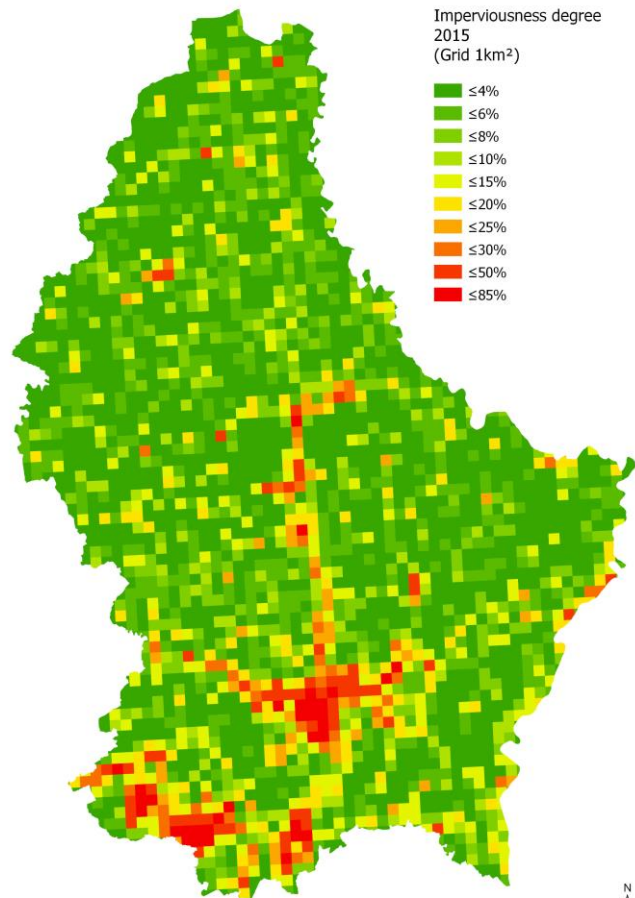


- buildings
- other constructed area
- permanent herbaceous vegetation
- seasonal herbaceous vegetation
- trees and bushes
- water

Imperviousness degree



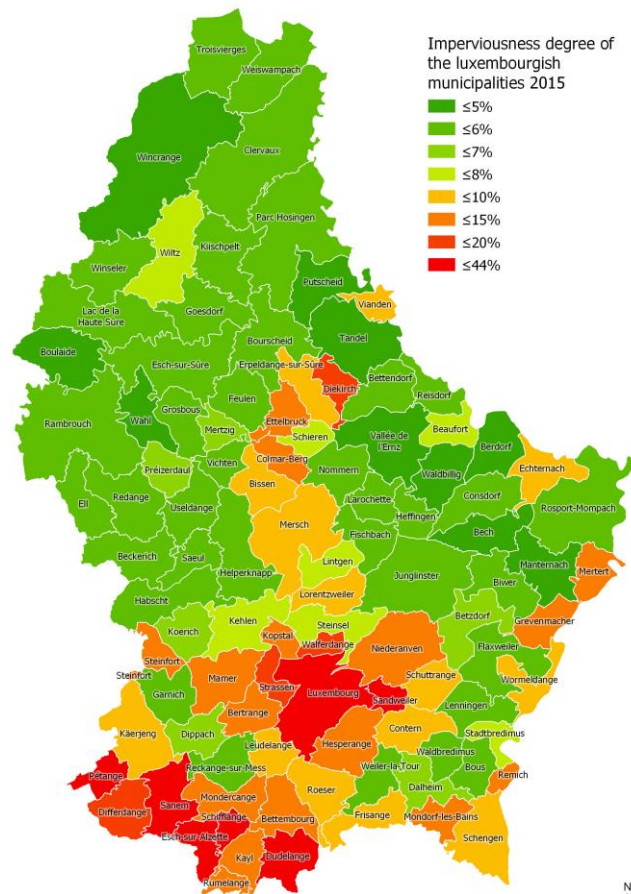
LE GOUVERNEMENT
DU GRAND-DUCHÉ DE LUXEMBOURG



Imperviousness degree



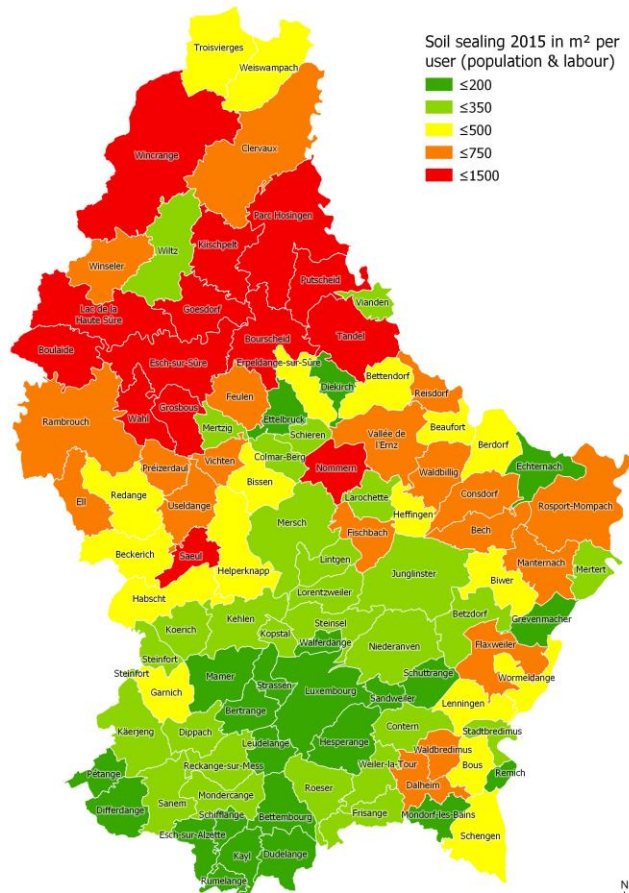
LE GOUVERNEMENT
DU GRAND-DUCHÉ DE LUXEMBOURG



Soil sealing per user



LE GOUVERNEMENT
DU GRAND-DUCHÉ DE LUXEMBOURG





- Hierarchical classification system
- 6 thematic blocks (51 subclasses):
 - Settlements,
 - Residential, Agricultural, Industry & commerce, Square, Parks, ...
 - Transport,
 - Road, Railways, ...
 - Agriculture,
 - Arable Land, Grassland, Orchard, ...

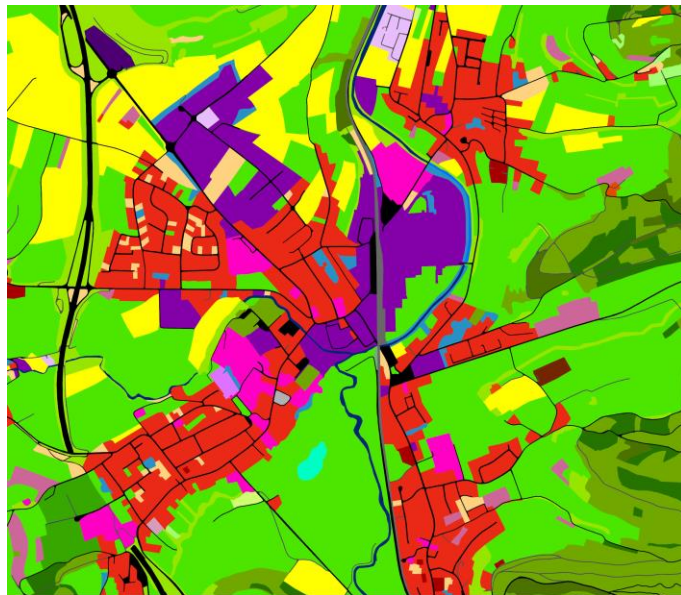


- Forestry
 - Coniferous, Mixed, Deciduous, ...
- Natural areas (vegetated and non-vegetated) and
 - Gravel, Rocks, Bushes, ...
- Water systems
 - Running Water, Still Water ...

Land Use Map



LE GOUVERNEMENT
DU GRAND-DUCHÉ DE LUXEMBOURG



- | | |
|---|----------------------------|
| Residential | Grassland |
| Agriculture facilities | Orchard |
| Industry & Commerce | Special cultures: Other |
| Unused urban areas and brownfields | Forest: Coniferous |
| Social, Military, Cultural and Other | Forest: Mixed |
| Residential (Estate) | Forest: Deciduous |
| Agriculture facilities (Estate) | Forest: Young forest |
| Industry & Commerce (Estate) | Forest: Clear cuts |
| Cemetery | Grassland |
| Square | Bushes |
| Park | Running water: Natural |
| Public facilities: Other | Running water: Artificial |
| Camp ground | Standing water: Artificial |
| Other sports facilities | Rural roads |
| Other recreation facilities | Main roads |
| Utility (production, disposal facilities) | Railways |
| Construction | Parking |
| Arable land | |

0 250 500 m



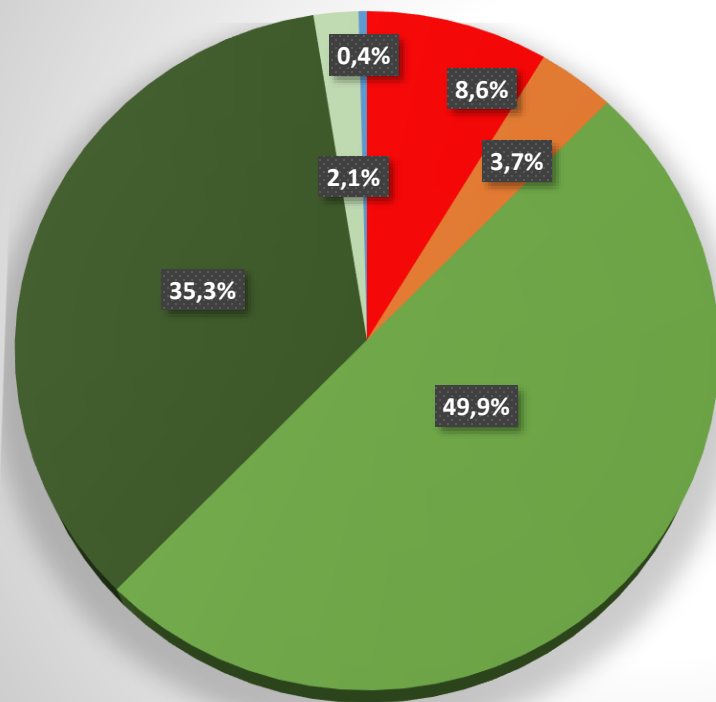
Auteur: MEA - DATer 2019
Fond de carte: Land Cover 2015



0 250 500 m



MEA - DATer 2019
Orthophoto 2016

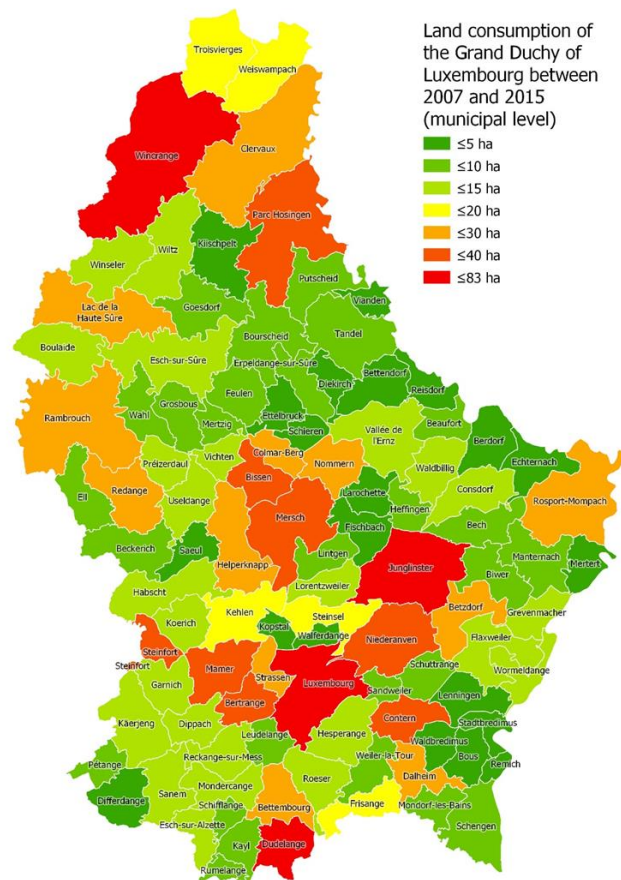


- Settlement
- Transport
- Agriculture
- Forest
- Natural surfaces
- Water

Land take between 2007 and 2015



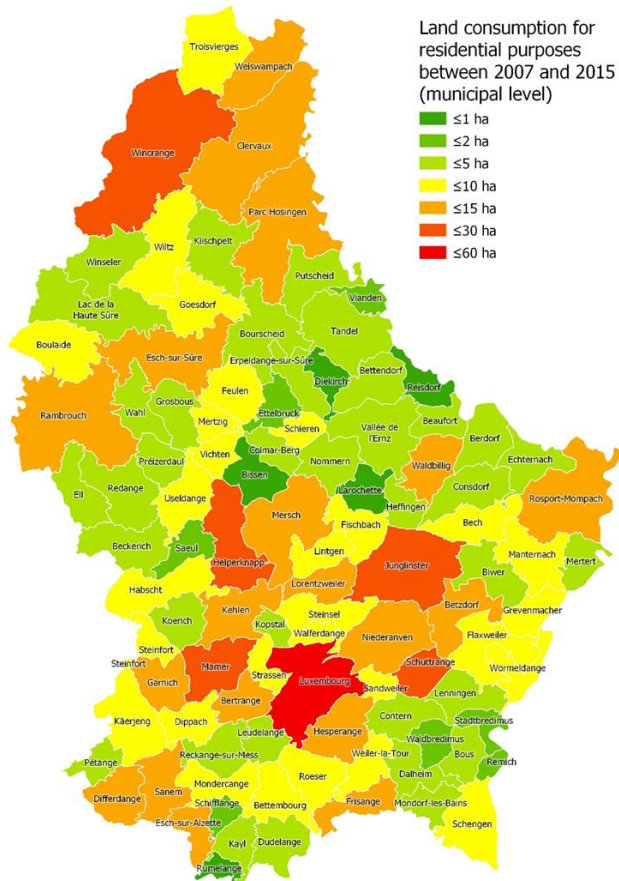
LE GOUVERNEMENT
DU GRAND-DUCHÉ DE LUXEMBOURG



Land take for residential purposes



LE GOUVERNEMENT
DU GRAND-DUCHÉ DE LUXEMBOURG





- Settlement and transport: + 1400 ha (14 km²)
 - Land consumption/take = 0,5 ha per day

- Agriculture: - **1200 ha**

- Forest: - **200 ha**



2007

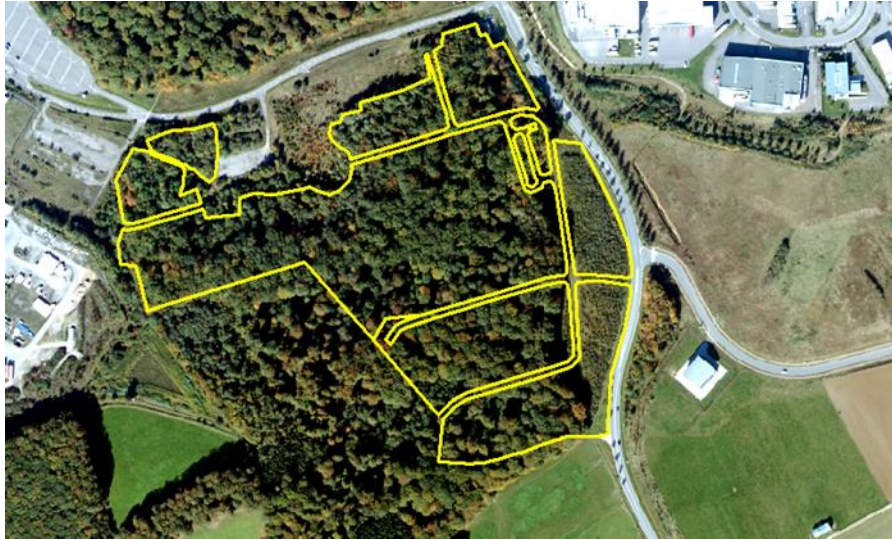


Cessange

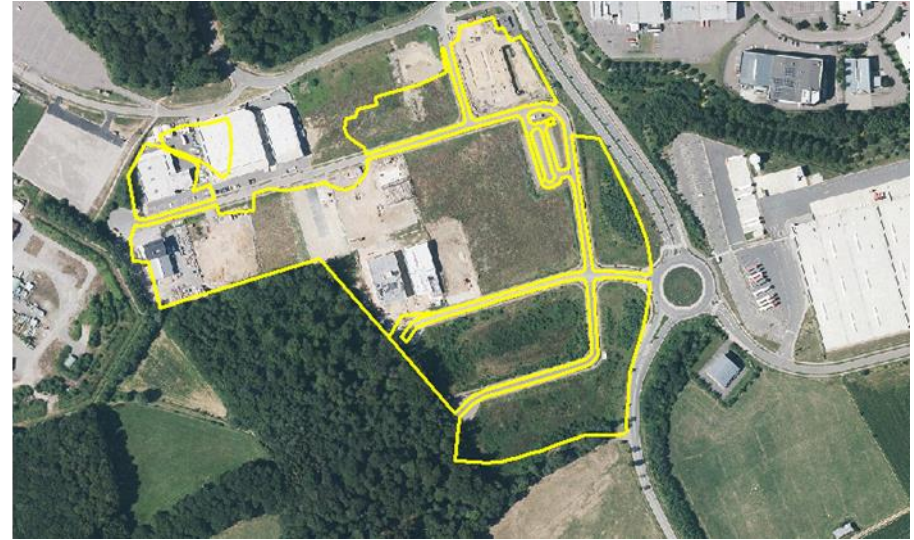
2015



5,2 ha



ZI Contern

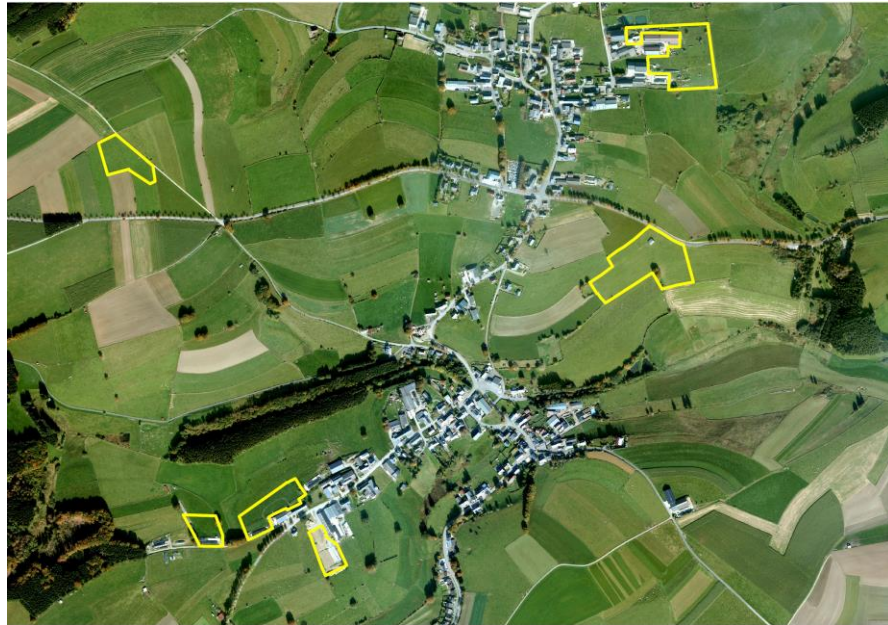


5,4 ha

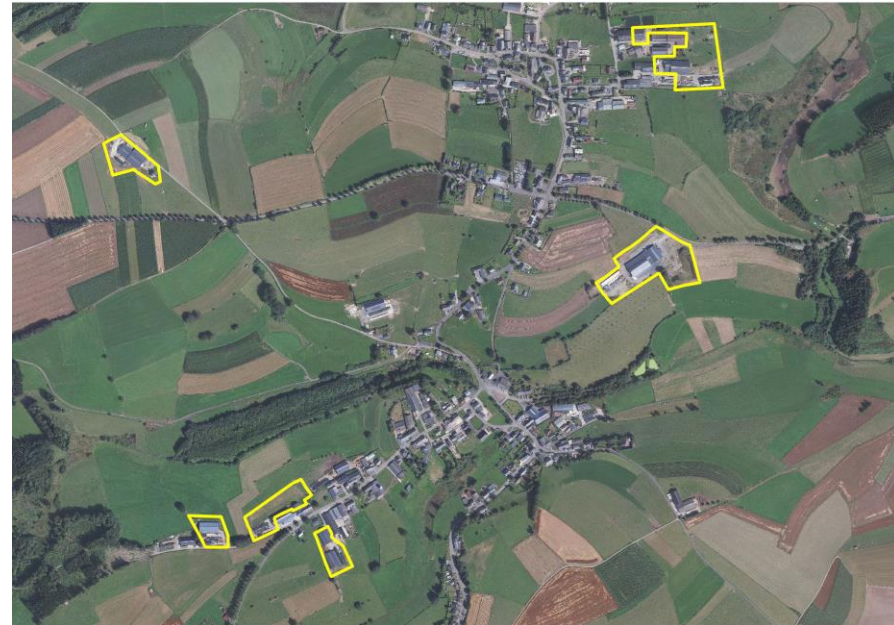
Examples – agricultural facilities



LE GOUVERNEMENT
DU GRAND-DUCHÉ DE LUXEMBOURG



Hachiville, Hoffelt

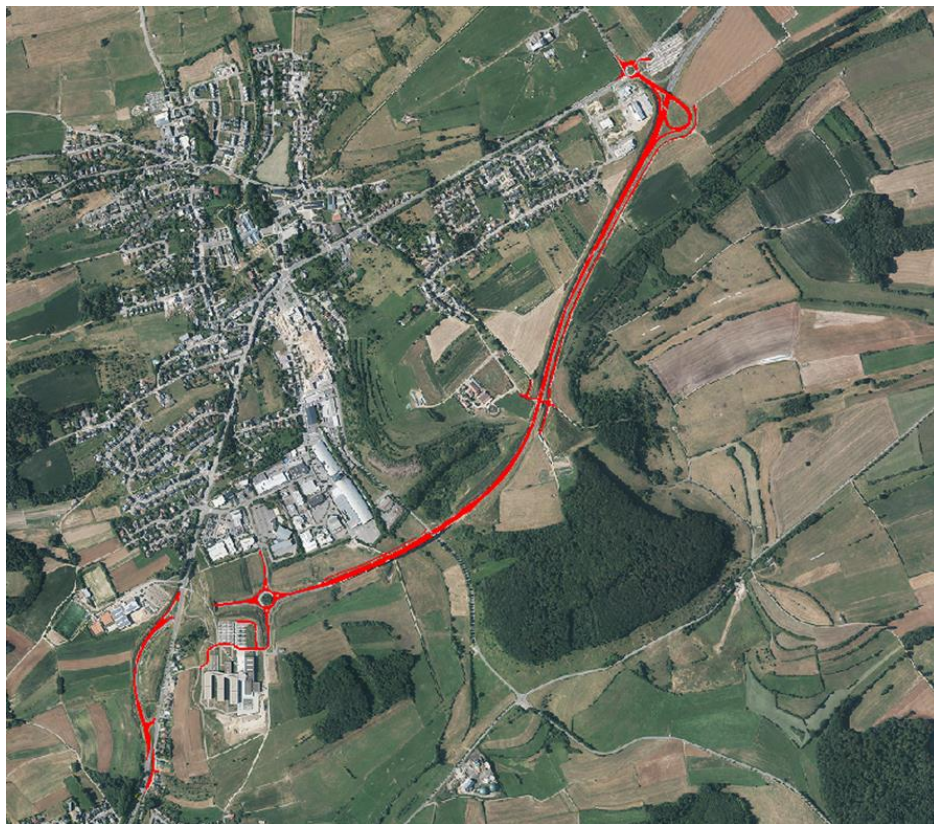


8,6 ha

Examples – transport



LE GOUVERNEMENT
DU GRAND-DUCHÉ DE LUXEMBOURG



6,2 ha – length 3,5 km (bypass road)

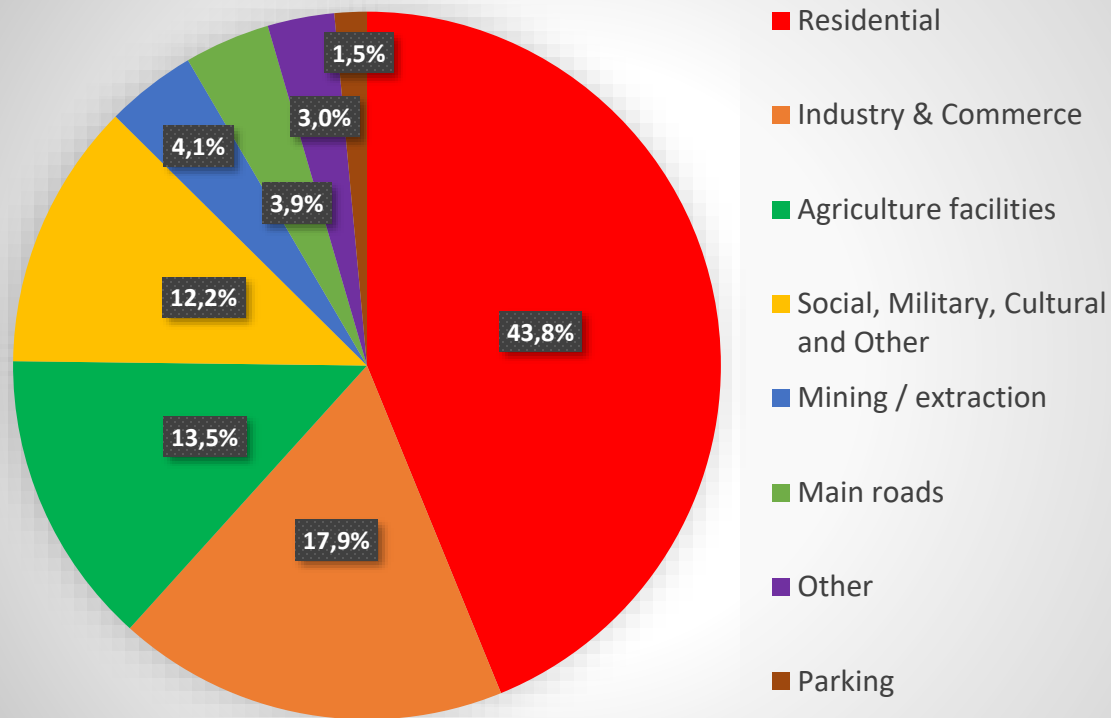


2,32 ha

Land use changes by LU classes



LE GOUVERNEMENT
DU GRAND-DUCHÉ DE LUXEMBOURG



Imperviousness degree by LU classes



LE GOUVERNEMENT
DU GRAND-DUCHÉ DE LUXEMBOURG



Imperviousness degree of LU classes



Imperviousness degree by LU classes



LE GOUVERNEMENT
DU GRAND-DUCHÉ DE LUXEMBOURG

	Imperviousness degree
Settlement	44%
Industry & Commerce	74%
Mining / extraction	67%
Agriculture facilities	62%
Cemetery	51%
Square	47%
Utility (production, disposal facilities)	46%
Residential	38%
Other sports facilities	35%
Social, Military, Cultural and Other	33%
Unused urban areas and brownfields	22%
Camp ground	17%
Other public facilities	8%
Other recreation facilities	7%
Park	7%
Golf course	2%



- imperviousness degree
- artificial area
- artificial area per inhabitant
- artificial area per inhabitant & worker
- annual land take per inhabitant
- land take by housing



- land take by industrial and commercial sites
- land take by agricultural facilities
- land take by transport and infrastructures
(ha/year)



- LC & LU 2015: compatibility and comparability with former datasets
- shorter update intervals

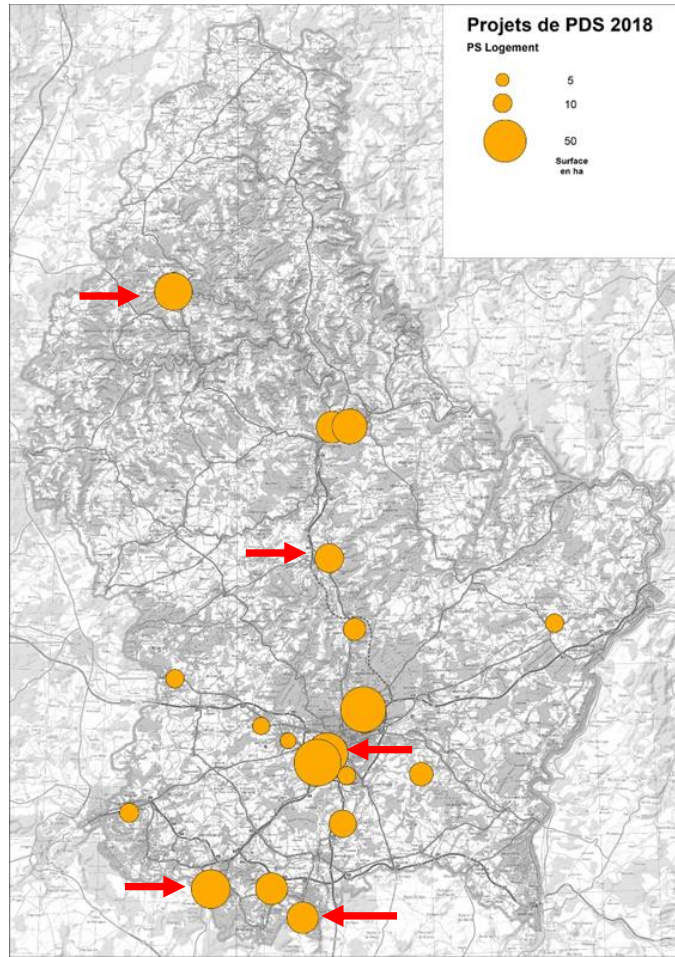


- regular update of LC and LU (every 3 years)
- evaluate land take as accurately as possible
- reduce land take despite demographic and economic growth (→ no net land take by 2050)
- define land take thresholds at national and municipal level
- redevelop land previously used (e.g. as industrial site)
- densification of existing quarters
- preservation of green areas

The Housing Sectoral Plan:



LE GOUVERNEMENT
DU GRAND-DUCHÉ DE LUXEMBOURG



→ redevelopment of land
previously used for industrial or
commercial purposes
(brownfields) for residential
purposes



- better understanding of densification
- data on construction volume → density
- more detailed distribution and differentiation of jobs

UNDERSTANDING LAND TAKE.

INDICATORS, DATASETS, MAPPING



Tom Fourmann

Marco Tholl

Tom.Fourmann@mat.etat.lu

Marco.Tholl@mat.etat.lu